

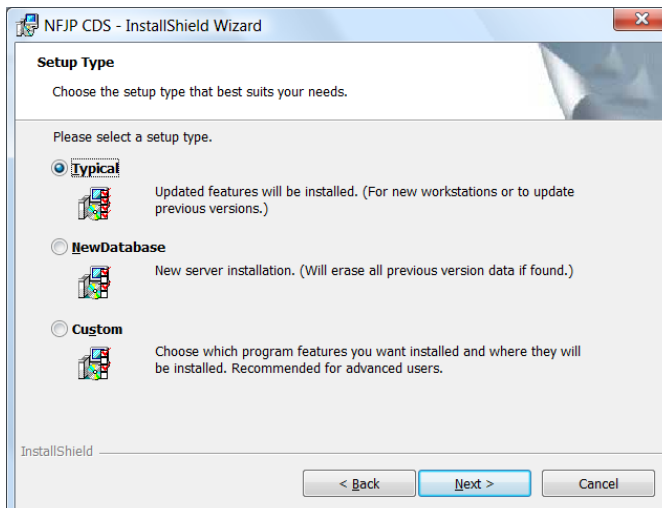
CDS Setup Instructions

1. Click “NFJP CDS Setup” and then click “Save” to save “setup.exe” file to your desktop.
2. If Publisher is not Motivation Education & Training, then do not use. Download again later.
3. Run the NFJP CDS setup (Run as Administrator on Windows Vista and Windows 7).
4. Click “Next >” on the Welcome screen (shown below).



5. On the Setup Type screen (shown below) select “Typical” when you are upgrading a previous version of NFJP CDS or if you are installing on a workstation that will connect to another computer on the network for the database.

Select “NewDatabase” if you need to install NFJP CDS with a new database (for trial users, agencies other than MET, or for new server installations). After installation, the database (default location `c:\Program Files\NFJPCDS`) may be shared on a network with the network share name set as “NFJPCDS” and the network drive mapped on the other workstations as drive “M” with path set to `\\server\NFJPCDS` where server is the name of your file server.



6. Click “Next >” on the Setup Type screen.
7. Click “Install”. Click “Finish”.